

# Holoscope

## User manual

**\* Please read this manual carefully before using the equipment \***

# Holoscope

## **Warn:**

1. Do not bend or twist the power cable too much; otherwise, the power cable may be damaged and a fire may occur
2. Do not allow the machine to come into contact with rain or other liquids
3. Do not use or store the machine in high temperature, high pressure and strong magnetic field, dusty and humid environment

## **Attention:**

1. Install the host securely to avoid falling, the power cable may be damaged and a fire may occur
2. Please install the product in a place that cannot be touched by human hands, or buy a protective cover to avoid injury
3. Stable installation: Ensure that the 3D fan will not loosen and fall off during use. After the installation, You can shake the 3D fan vigorously to check whether there is a rocking phenomenon

## **Common faults and maintenance:**

1. The device cannot be turned on after being plugged in, and no screen is displayed. Check whether the power supply is normal. After the power supply is powered on, observe whether the power indicator is on.
2. After the device is started, the screen is abnormal or the whole light bar is not on. Check whether the screws are not tightened and whether there are foreign objects in the connector.
3. A black circle appears after the device has been running for a period of time. Because there will be dust and stain on the surface of the lamp bead when the equipment is running, clean the surface of the lamp bead with a soft dry cloth, and usually clean the dust on the lamp board regularly to achieve the most ideal display effect.
4. The following situations do not belong to the scope of free warranty: unauthorized disassembly, maintenance, equipment water, oxidation and other artificial damage

## Product specifications and parameters

Product model	P042- Ordinary brightness	P042- Highlight	P045- HD	P50	P56	P62	P66	P265
Number of lamp heads (pieces)	244	244	352	576	678	722	768	768
Display diameter (CM)	420*420	420*420	450*450	487*487	560*560	615*615	650*650	650*650
Resolution	1024*640	1024*800	2000*704	2000*1152	2000*1356	2000*1444	2000*1536	2000*1536
Input voltage (V)	12V2A	12V2A	12V2A	24V2A	24V2A	24V3A	24V3A	24V3A
Rated power (W)	18W	20W	24W	48W	48w	72W	72w	72w
Angle brightness control	√	√	√	√	√	√	√	√
Splicing without horns	×	×	×	×	×	×	×	√
Multiple screens are spliced	×	×	√	√	√	√	√	√
High frame rate camera	√	√	√	√	√	√	√	√
Multi-function remote control	√	√	√	√	√	√	√	√
Bluetooth audio	×	×	√	√	√	√	√	√
Package size (MM)	264*143*58	264*143*58	264*143*58	284*185*74	370*195*80	370*195*80	370*195*80	370*195*80

## Two blade advertising machine



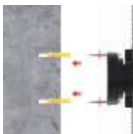
① Power port    ② LED lamp bead    ④ Infrared signal lamp    ③ Card slot    ⑤ U-shaped pendant

### Installation demonstration:



1. Insert the two blades into the host port, align the six screws with the screws holes, and fix the indicator securely. Otherwise, the indicator strip may fall off.

2. For wall mounting, insert the screws through the wall-mounting holes, align them with the expansion screw tube, and drive them into the appropriate positions.



## Installation instructions:

1. Insert the fan blades into the unit in pairs(A to A, B to B), then tighten 12 screws into the screw holes to secure them. Make sure they are tight or else the light strip may fall off. Installation is complete!



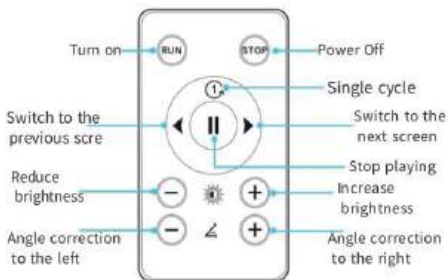
2. When installing the wall mount, just screw in the screws through the mounting block and into the right spot.



3."Align the U-shaped hanger at the bottom of the host, then push it down and screw the top of the U-shaped hanger on the machine hanger with a small screw to complete installation."



## Remote control introduction



## Scan and download the APP



Android



IOS

1. Search for Holoscope in the APP store for software download or contact the distributor for download. After downloading, open the app permission and use it.

## Mobile APP transmits video

1. After the device is turned on, a WiFi signal will be established. Open the WiFi screen on your phone's Settings and search for WiFi names beginning with 3D-P, for example: 3D-PXXXXXXX; The default password of the WiFi hotspot is 12345678



②



③



④



⑤

When a message is displayed indicating that the WLAN cannot be connected to the network, you must select "Stay connected" And the first time to open the APP prompt must select "Continue trying to use wireless LAN"

Follow "Figure 1 (Android)" or "Figure 2 (IOS)"

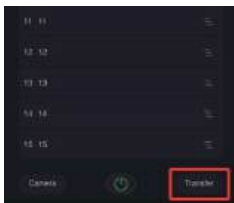


Figure 1 (Android)



Figure 2 (IOS)

1 Click Transfer → 2 Video → 3 Select Upload video → 4 Confirm content → 5 Upload process → 6 Upload 100%



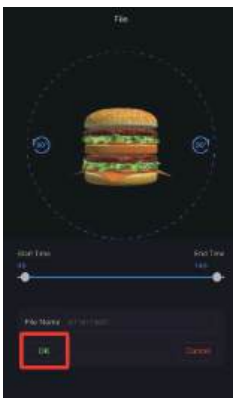
①Click "Trasfer"



②Click "Video"



③Select the video you want to upload



④Click "OK"



⑤ Uploading



⑥Transmission complete

The video transfer has been successful, and if you just need to replace the video or add more content, you have done so successfully without having to go through the next steps

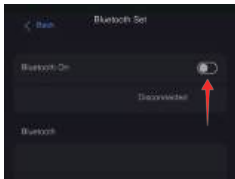
## Connect the Bluetooth speaker

1. Click on the APP to set "Bluetooth Settings "(the passwordless Bluetooth speaker must be used, and the transmitted video must have specific sound)

Bluetooth Settings Turn on Bluetooth → Wait for automatic search for Bluetooth speaker → Connected (video must have specific sound)



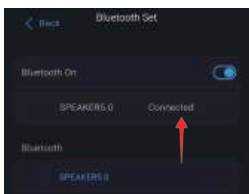
① Click "Bluetooth"



① Bluetooth On



③ Wait for the Bluetooth speaker



④ Connected to be automatically searched

## Text LOGO making

Design → Select Template → Save → Click Transfer → Select Local → Select Video → Transfer



① Click design



② Save



③ Back to page transfer



④ Select Local



⑤ Select video



⑥ In transmissio

## Instructions for using the PC

Download link: <http://bg.holoscope.tech/sh/apk/app/getLastAPK/0>

After the device is powered on, the WiFi signal will be established. Open the WiFi interface of the computer and search for the name of WiFi beginning with 3D-P, for example, 3D-PXXXXXXX. The default password of WiFi is **12345678**. Enter password Click join

Download Software Connection → Connect to WIFI



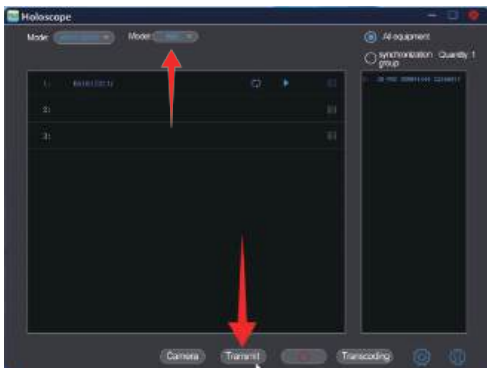
① Download software



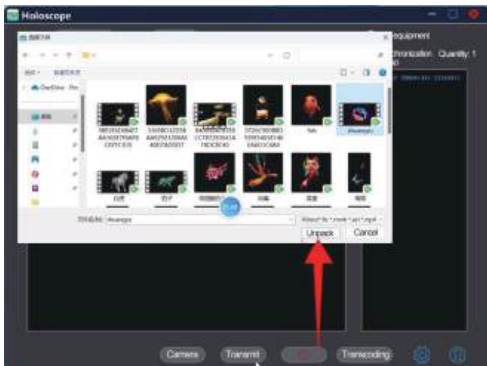
② Connect to WIFI

## The PC transmits the video

Open software → Select machine model → Open



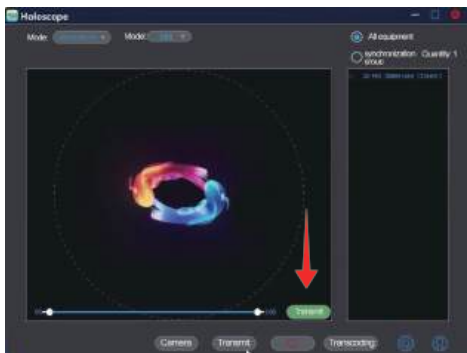
③ Transfer



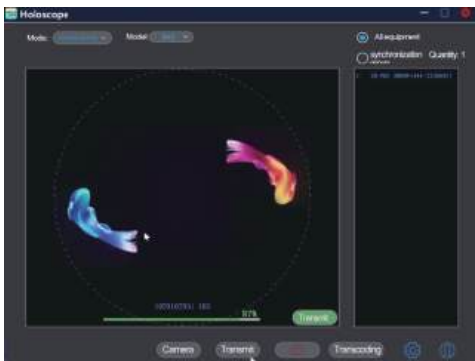
④ Select the video you want to upload

## PC based video transmission

Start transmitting → Waiting for transmission to complete



⑤ Start transmissio



⑥ Wait for transmission